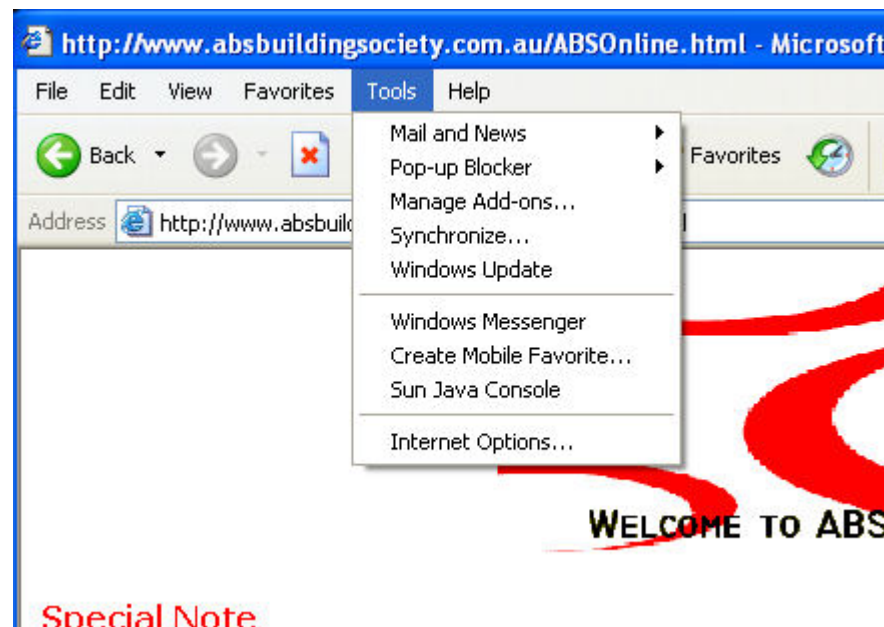


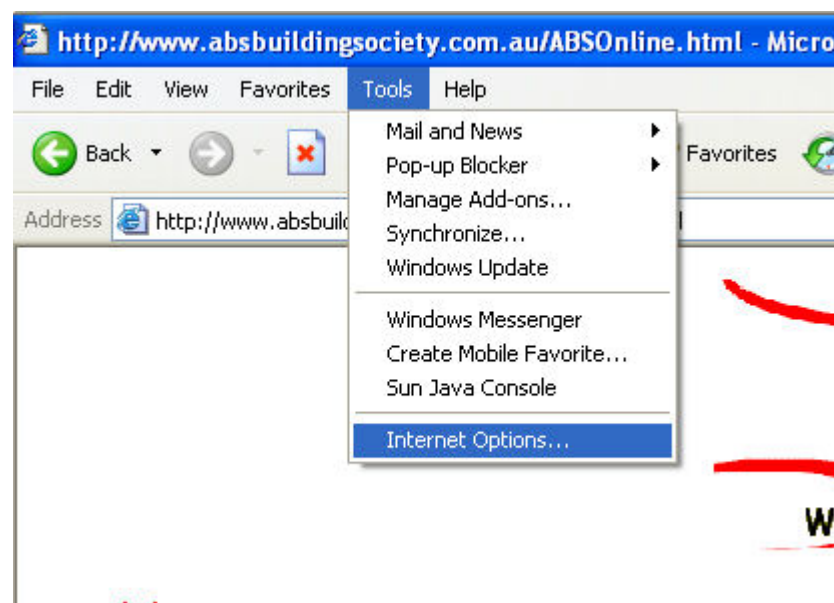
Internet Explorer

The Internet Explorer web browser utilises pop-up blocking in both version 6 and 7. To access the login page using Internet Explorer, follow these steps:

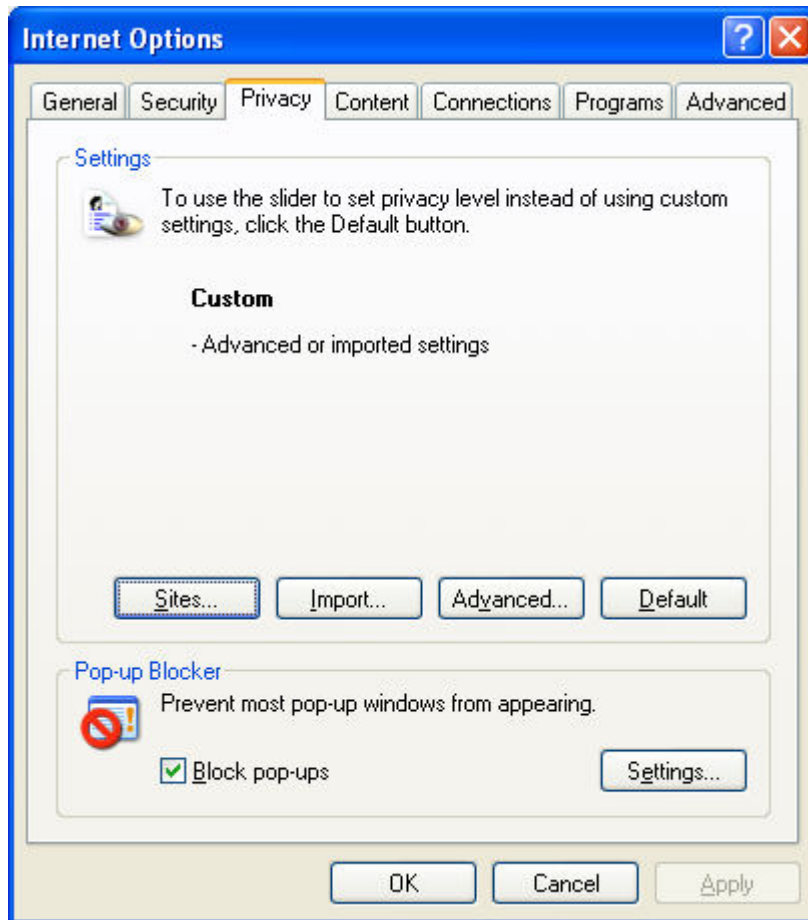
1. Select 'Tools' from the main menu



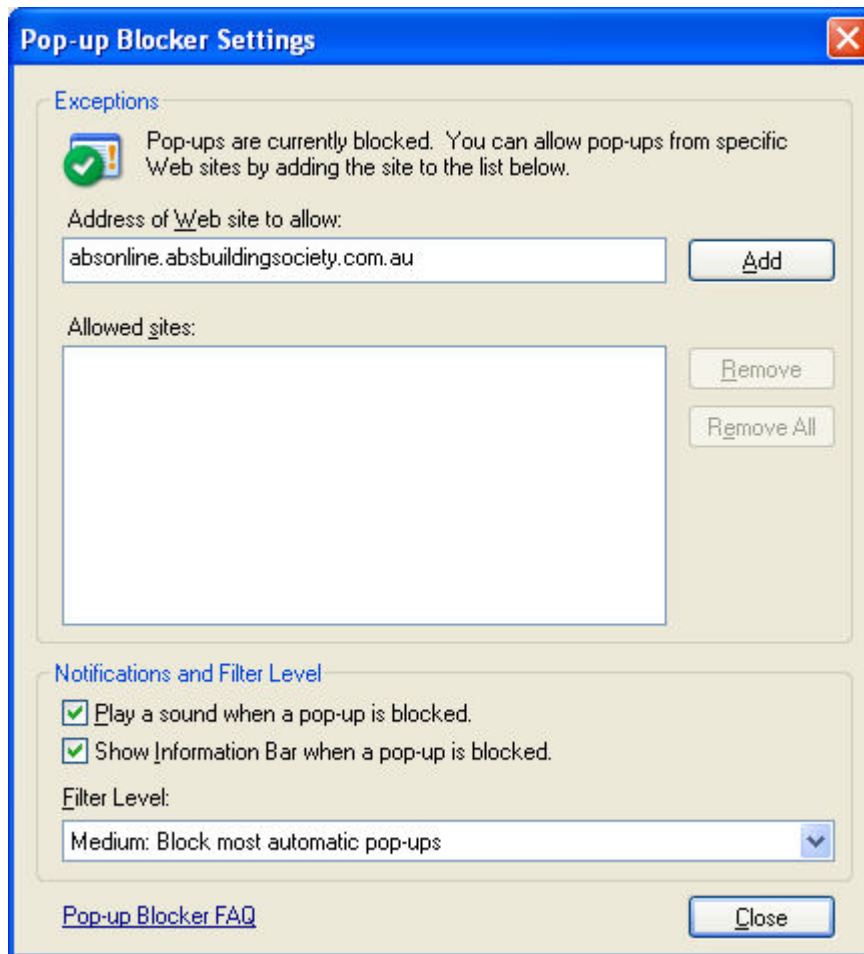
2. Then Select 'Internet Options'



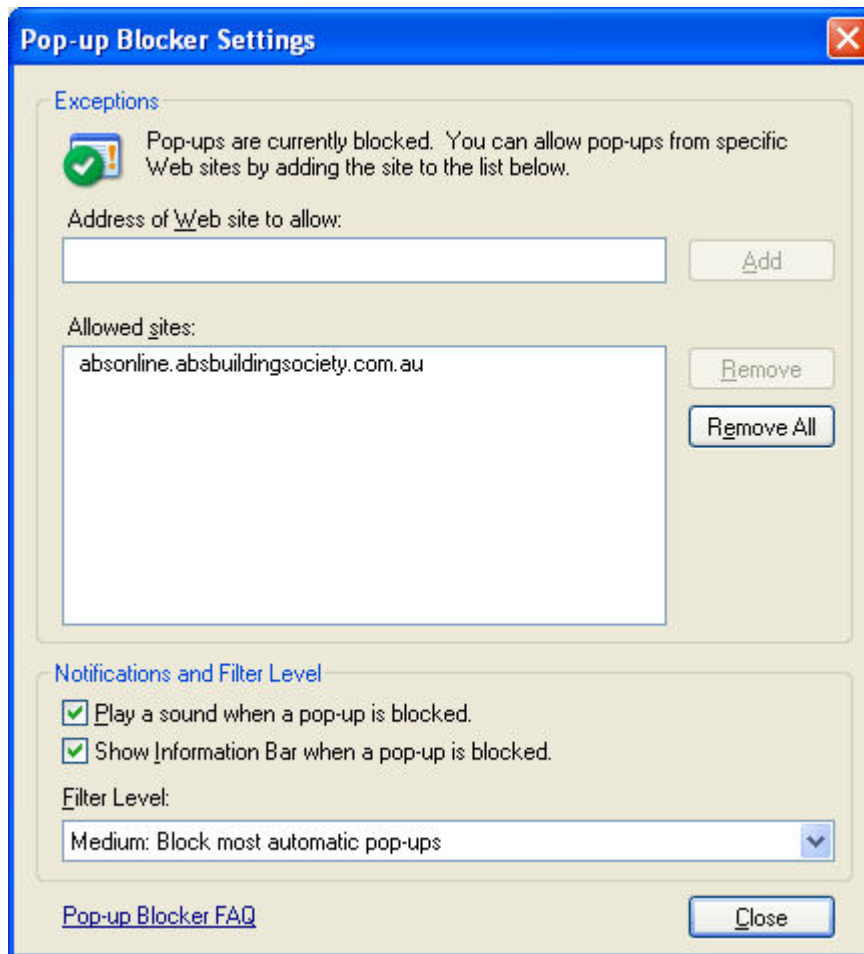
3. Click on the tab 'Privacy' and you will see in the bottom 1/3 of the resulting window 'Pop-up Blocker'. Click on the button 'Settings'



4. Type in 'absonline.absbuildingsociety.com.au' in the top section as shown below. Then click 'Add' to have ABSOnline included in your 'Allowed sites'.



5. Upon completion it will be listed as shown. Click 'Close' and the 'OK' to return to your browser.



You will then be able to access the login page as usual.